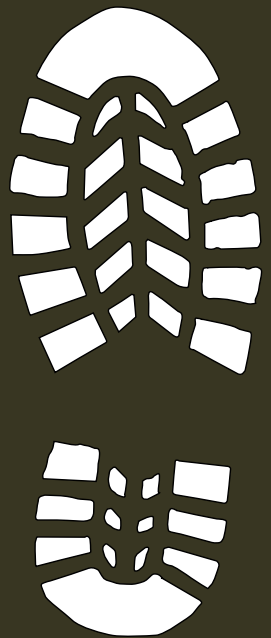


# RECOMENDACIONES PARA LA SEMANA CULTURAL



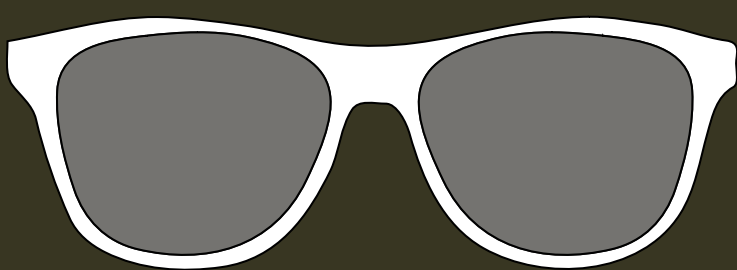
- Las salidas siempre serán del plantel de la Sexta Sección a las 8:00am



- Zapatos cómodos y ropa fresca, gorra o sombrero.



- Bloqueador solar y lentes para sol



- Credencial escolar y cartera



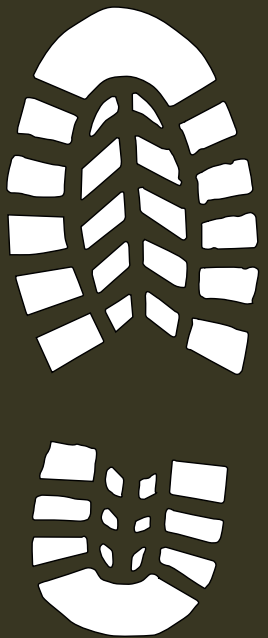
- Las llegadas siempre serán en el plantel de la Sexta Sección como esta indicado en el itinerario



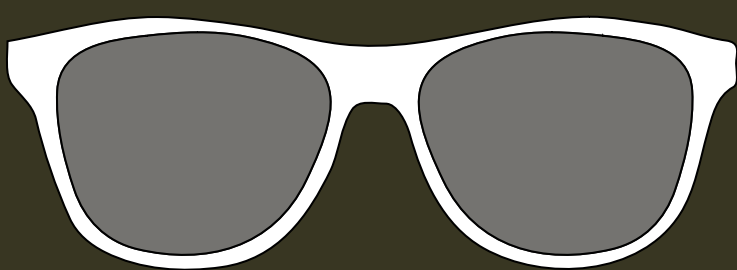
# CULTURAL WEEK RECOMMENDATIONS



- Meeting point will always be at Sexta seccion campus at 8:00am



- Comfortable shoes and hot weather clothes , cap or hat



- Sunscreen and sunglasses



- School ID and wallet



- The arrivals will always be at Sexta Sección campus as indicated in the itinerary



# MONDAY ACTIVITY



APPOINTMENT :Plantel VI  
Sección 8:00am



## LA MEXICANA (PARK)

9:00am-12:00pm

TREASURE HUNT ACTIVITY

AND

ENJOY THE NATURE

12:00-13:00hrs lunch time



## DOWNTOWN



## ANTARA MALL

HAVE LUNCH AT  
50 FRIENDS 16:00hrs

AND FINALLY GO TO THE  
MOVIES 19:00hrs



# TUESDAY ACTIVITY



APPOINTMENT: Plantel VI

Sección salida 8:00am

Regreso 15:00pm



# TEOTIHUACAN



# WEDNESDAY ACTIVITY



**APPOINTMENT: Plantel VI**  
**Sección Salida 8:00am**  
**Regreso 15:00 pm**

## CASTILLO DE CHAPULTEPEC



**BOX LUNCH 12:00pm in front of**  
**Museo Tamayo**

## MUSEO DE ANTROPOLOGÍA

